

# SMDI

SCREEN MANUFACTURING DESIGN INC.

405-470-6553

## Cobra ® Replacement Screens

### Works with these Shakers:

Brandt ® King Cobra

Brandt ® ATL-1000

### Quantity per Shaker:

3ea. King Cobra / ATL-1000

4ea. King Cobra / ATL-1000

### Type of Screen:

Framed / Pre-tensioned

### Gasket:

Nitrile

### Weight:

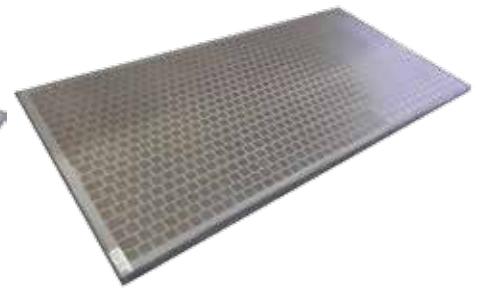
37 pounds (16.78 kgs)

### Approximate Dimensions:

49" X 25" X .75"

(124.46cm X 63.5cm X 1.905cm)

6.01ft sq Non-Blanket Area



## Mesh & API Information

SMDI MESH TYPE	SMDI MESH SIZE	API RP 13C Designation	D100 Cut Points (Microns)	API Micron Range for Screen Designation	SMDI Part Number
DX Square	38	API 35	544	>462,5 to 550,0	BHXMB038
DX Square	50	API 45	355	>327,5 to 390,0	BHXMB050
DX Square	70	API 60	270	>231,0 to 275,0	BHXMB070
GS Oblong	84	API 60	254	>231,0 to 275,0	BHXMBGS084
GS Oblong	110	API 70	225	>196,0 to 231,0	BHXMBGS110
GS Oblong	140	API 80	165	>165,0 to 196,0	BHXMBGS140
GS Oblong	175	API 100	156	>137,5 to 165,0	BHXMBGS175
GS Oblong	210	API 120	136	>98,0 to 116,5	BHXMBGS210
DX Square	165	API 140	103	>98,0 to 116,5	BHXMB165
GS Oblong	250	API 170	88	>82,5 to 98,0	BHXMBGS250
DX Square	250	API 200	70	>69,0 to 82,5	BHXMBGS250
DX Square	270	API 230	66	>58,0 to 69,0	BHXMB270
DX Square	325	API 325	44	>41,5 to 49,0	BHXMB325

We manufacture a complete line of replacement shaker screens for the above as well as custom shakers

SMDI • 200 N. ROCKWELL AVE STE D • OKLAHOMA CITY, OKLAHOMA 73127

PHONE • 405-470-6553 • FAX • 405-792-2202

EMAIL • SALES@SMDISCREENS.COM • WWW.SMDISCREENS.COM